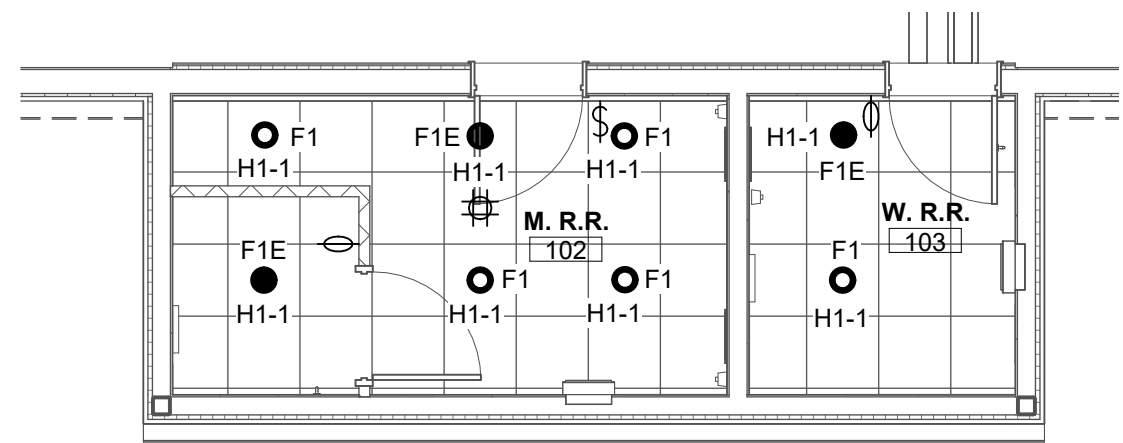


1 ENLARGED LIGHTING PLAN - LOBBY  
3/16" = 1'-0"



2 ENLARGED LIGHTING PLAN - SHOP RESTROOM  
3/16" = 1'-0"

### LIGHTING KEYNOTES:

- 1 COORDINATE LIGHT FIXTURE LOCATIONS WITH MECHANICAL CONTRACTOR TO AVOID CONFLICTS WITH DUCTWORK AND EQUIPMENT PRIOR TO ROUGH-IN.
- 2 SEE SHEET E-104 2ND FLOOR ENLARGED LIGHTING PLAN FOR LIGHTING THIS SPACE.
- 3 CONTROLLED BY PHOTOCELL / TIMECLOCK COMBINATION VIA NLIGHT RELAY PANEL MOUNTED ADJACENT ELECTRICAL PANEL. TYPICAL THIS FIXTURE TYPE.
- 4 MOUNT EXTERIOR FIXTURE AT APPROX. 10' AFF. COORDINATE HEIGHT WITH EXTERIOR CANOPIES. VERIFY ALL EXACT FIXTURE HEIGHTS WITH ARCHITECT PRIOR TO ROUGH-IN. TYPICAL THIS FIXTURE TYPE.
- 5 SUSPEND FIXTURE SO THAT BOTTOM OF FIXTURE IS 12' AFF. FIXTURE SHALL BE SUSPENDED FLUSH WITH BOTTOM OF CEILING STRUCTURE WITH PROVIDED ADJUSTABLE CABLING. VERIFY ALL EXACT FIXTURE HEIGHTS WITH ARCHITECT PRIOR TO ROUGH-IN.
- 6 NLIGHT ARP INTENC16 NLT RELAY PANEL.
- 7 CENTRALLY CONTROLLED SPACE. PROVIDE NLIGHT POWER PACK AND ALL NECESSARY COMPONENTS / LOW VOLTAGE CABLING TO INTERFACE WITH NLIGHT ECLYPSE HEAD END. SUBSCRIPT INDICATES CONTROL ZONE.
- 8 MOUNT WALL MOUNTED STRIP LIGHT SO THAT CENTER OF FIXTURE IS 8' AFF. VERIFY EXACT FIXTURE HEIGHTS WITH ARCHITECT PRIOR TO ROUGH-IN.
- 9 SUSPEND FIXTURE SO THAT BOTTOM OF FIXTURE IS 8' AFF. VERIFY ALL EXACT FIXTURE HEIGHTS WITH ARCHITECT PRIOR TO ROUGH-IN.
- 10 SUSPEND FIXTURE SO THAT BOTTOM OF FIXTURE IS 12' AFF. VERIFY ALL EXACT FIXTURE HEIGHTS WITH ARCHITECT PRIOR TO ROUGH-IN.
- 11 STAIRWELL LIGHTING TO BE UNSWITCHED.
- 12 FOR LOCAL CONTROL TO WORK IN CONJUNCTION WITH NLIGHT ECLYPSE.
- 13 SUSPEND FIXTURE SO THAT BOTTOM OF FIXTURE IS 10' AFF. VERIFY ALL EXACT FIXTURE HEIGHTS WITH ARCHITECT PRIOR TO ROUGH-IN.
- 14 SUSPEND EXIT SIGN TO LEVEL SO THAT TOP OF FIXTURES IS JUST BELOW BOTTOM OF BAFFLES LIGHTING THIS AREA.

### LIGHTING GENERAL NOTES:

- COLOR TEMP OF ALL LIGHTING FIXTURES TO BE 4000K CCT UNLESS NOTED OTHERWISE.
- FIXTURE FINISH DETERMINED BY ARCHITECT DURING SHOP DRAWINGS. INCLUDE COST FOR CUSTOM COLOR WHERE STANDARD OPTIONS ARE LIMITED.
- ALL LIGHTING CONTROLS SHALL MEET OR EXCEED REQUIREMENTS AS SET FORTH IN IECC 2021 SECTION C405.
- SUBSCRIPTS AT LIGHT FIXTURE DESIGNATIONS DENOTE SWITCHING SCHEME.
- ALL EXIT SIGNS AND EMERG FLOODS TO BE UNSWITCHED.
- EXTERIOR LIGHTING TO BE CONTROLLED VIA PHOTOCELL / TIMECLOCK COMBINATION VIA NLIGHT ARP INTENC16 NLT RELAY PANEL.
- PROVIDE ADDITIONAL UNSWITCHED CONDUCTOR TO BATTERY OF FIXTURE. TYPICAL OF TYPES ENDING WITH "E". PROVIDE ALL COMPONENTS NECESSARY TO OPERATE WITH CONTROLS AS NOTED UNDER NORMAL POWER.